

Downloading the Installation Executable

The installation executable for the current version of MISDmsds can be downloaded from:

<http://www.misd.net/MT/MISDmsds.htm>

The installation executable can also be found on the MISD website. Go to www.misd.net and select the MISD Departments, then select Management Technology.

| ABOUT MISD | MISD SCHOOLS | SPECIAL EDUCATION | MISD DEPARTMENTS | MACOMB SCHOOLS |
|---------------------|--------------|-------------------|--|----------------|
| Administration | | | Instructional Technology | |
| Assessment Center | | | Legal Affairs | |
| Business | | | Management Technology | |
| Center Programs | | | Macomb Infant Preschool Program (MIPP) | |
| Consultant Services | | | Special Education | |
| Human Resources | | | Transportation | |

Select MISD Departments to reveal the department list.

Select Management Technology.

Select the MISDmsds Collection Program link in the middle of the page.



STATE/FEDERAL REPORTING

- [MISDmsds Collection Program](#)
- [Center for Educational Performance and Information \(CEPI\)](#)
- [Michigan Education Information System](#)

Select the MISDmsds Collection Program link.

Downloading the Installation Executable

This will open the MISDmsds Collection Program web page where you can download the version by clicking on the preferred link. You will also find links to helpful documentation.

PROGRAM DOWNLOAD

- [MISDmsds v2.2.0.7 Data collection and validation program](#)

Click this link to download the installation executable.

DOCUMENTATION

- [MISDmsds Installation Directions](#) (updated 11-09-2015)
- [MISDmsds Documentation](#) (updated 05-31-16)
- [Creating a District Database](#)
- [Directions for MISDmsds User Defined File Import](#)

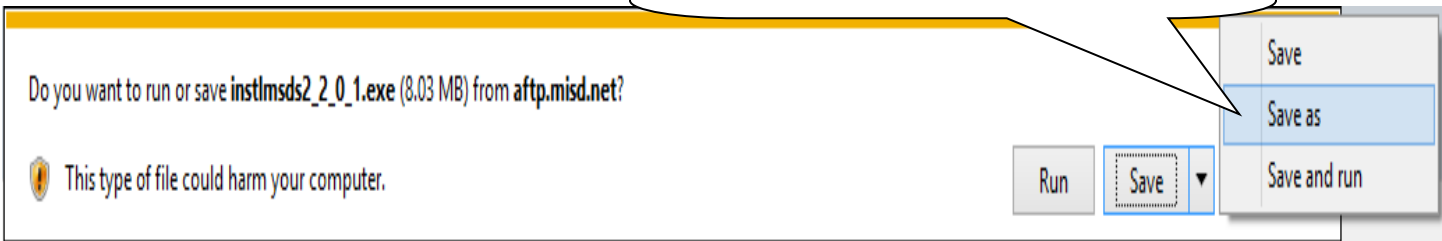
Save the program to your local machine, run it, and follow the directions to install. If you have suggestions for the installation that you think would be helpful to include on this page please email webmaster@msd.net and share your thoughts.

In order to use the program you will need to have administrative rights on the local machine, be set up as a Power User or have a profile that allows you to create and delete folders in the location where the program is installed. The default install location is:

C:\MISD\MSDS_EOY2016

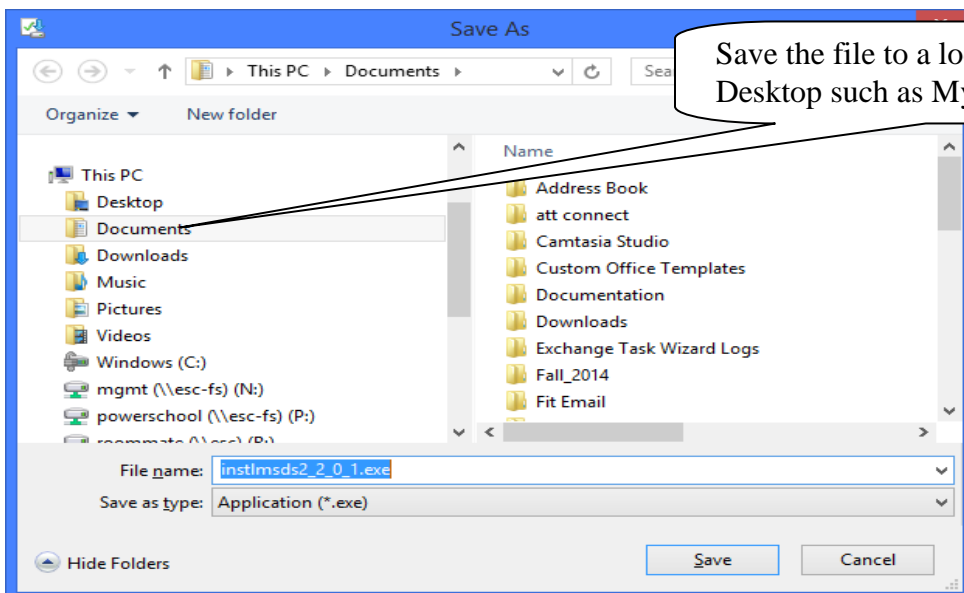
Click on the link for the preferred executable. You can choose to save the executable or run the application to install the program. Choosing the run option will install the MISDmsds program. For further instruction, see the section on installing MISDmsds.

Click Save As to download the installation executable to your computer.



Saving the executable:

Save the executable to a location other than your desktop, such as the Documents folder.

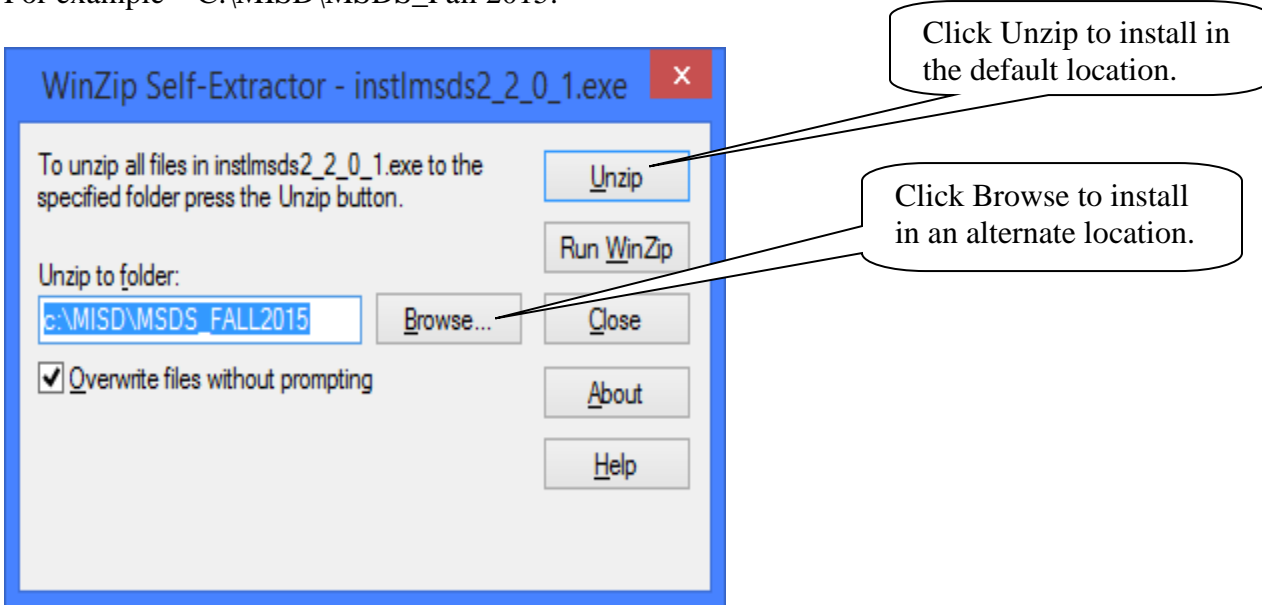


Installing MISDmsds

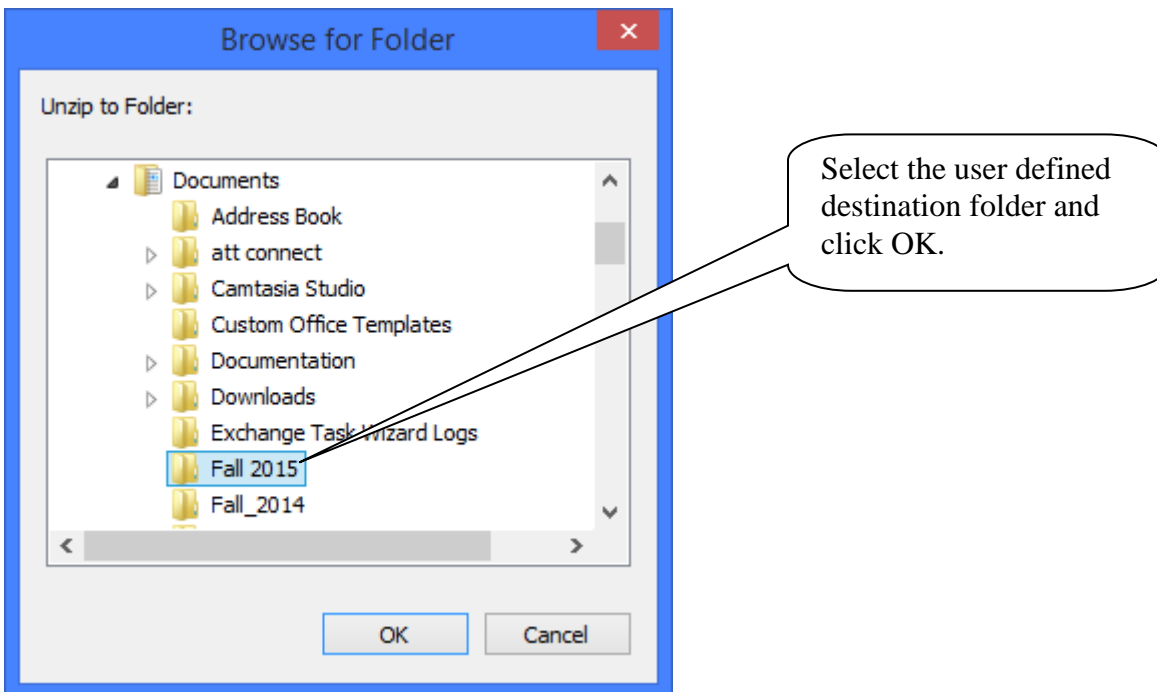
Choosing Run from the File Download dialog box or double-clicking the installation executable after saving it to your computer will open the WinZip Self-Extractor dialog box to begin the installation of the MISDmsds program.

Note: We recommend that the user installing the MISDmsds program be an administrator on the local computer to ensure that the user has the rights to create the necessary folders and files on the computer.

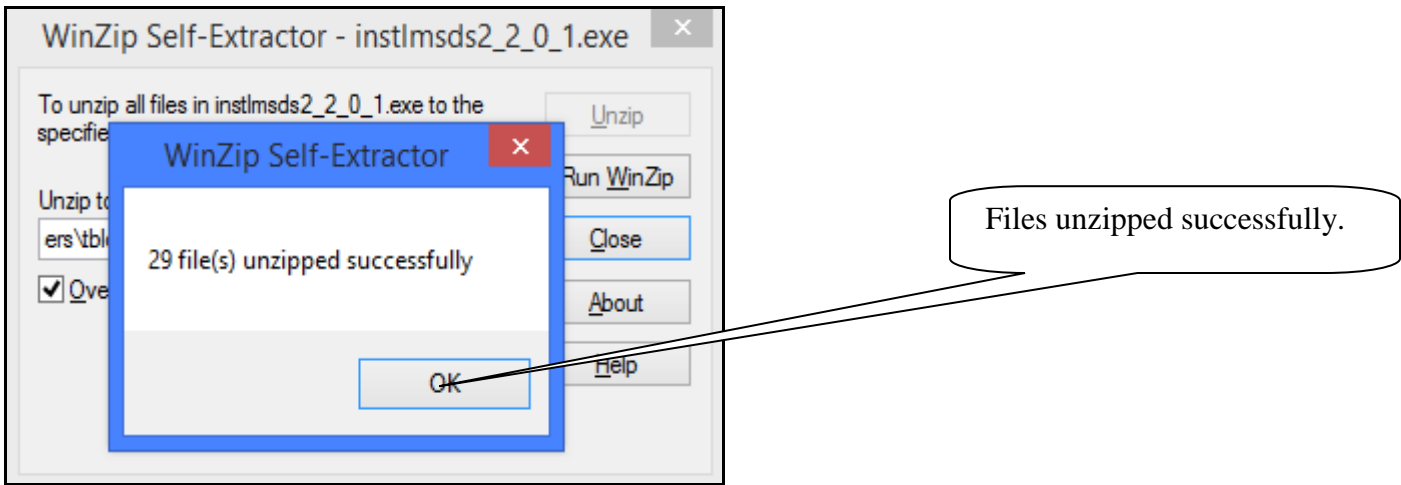
Click Unzip to install the program in the default location for the current collection.
For example – C:\MISD\MSDS_Fall 2015.



If you wish to install the program in an alternate location, click the Browse button. Select the folder where you wish to install the program and click OK, then click Unzip.



A message will be displayed when all files are unzipped.



Click Close to exit the MISDmsds installer.

